

# Walsall Safeguarding Partnership Partnership Safeguarding Spotlight

21 June 2024



# Congratulations to Sarah Neale Practice & Review Co-Ordinator



We are delighted to announce that Sarah Neale, has secured the permanent position of Practice and Review Coordinator for the Safeguarding Partnership after a robust recruitment exercise.

Sarah has worked within the WSP Business Unit for 5 years and has a wealth of experience that we are pleased we will continue to benefit from.

Sarah's first task is supporting the partnership in a full review of the Safeguarding Adult Review (SAR), Child Safeguarding Practice Reviews (CSPRs), and partnership audit processes. We also want to seek assurance that learning from these activities is reaching frontline practice. Lots to do!

Enjoy the role & congratulations Sarah

# WSP Priorities 2023 - 2025:

- Child Neglect
- Child Sexual Abuse
- All-Age Exploitation
- Self-Neglect and Hoarding



# Analysis of Safeguarding Adult Reviews: April 2019 - March 2023 (executive summary)

The **second national analysis of Safeguarding Adult Reviews** (SARs) in England was funded by Partners in Care and Health, supported by the Local Government Association (LGA) and the Association of Directors of Adult Social Services (ADASS). Its purpose was to identify priorities for sector-led improvement as a result of learning from SARs completed between 2019 and 2023, a period of time that included the Covid-19 pandemic.

The executive summary identifies the headline findings, drawing on the detail contained in three main reports:

**Report 1:** Stage one of the analysis considers the quantitative data from 652 review reports, reporting on the characteristics of the individuals involved, the types of abuse and neglect they experienced, and the nature of the SAR reviewing process.

**Report 2:** Stage two of the analysis focuses on the in-depth, detailed learning identified in a stratified sample of 229 SAR reports.

**Report 3:** Stage three of the analysis draws together conclusions from the analysis overall and identifies priorities for sector-led improvement.

## Briefings available for:

- [Elected Members](#)
- [Individuals & their families](#)
- [Practitioners](#)
- [SAB Chairs & Business Managers](#)
- [Authors of Safeguarding Adult Reviews](#)
- [Senior leaders & SAB members](#)

<https://www.local.gov.uk/publications/analysis-safeguarding-adult-reviews-april-2019-march-2023-executive-summary>

The full reports are being finalised and will be published shortly.

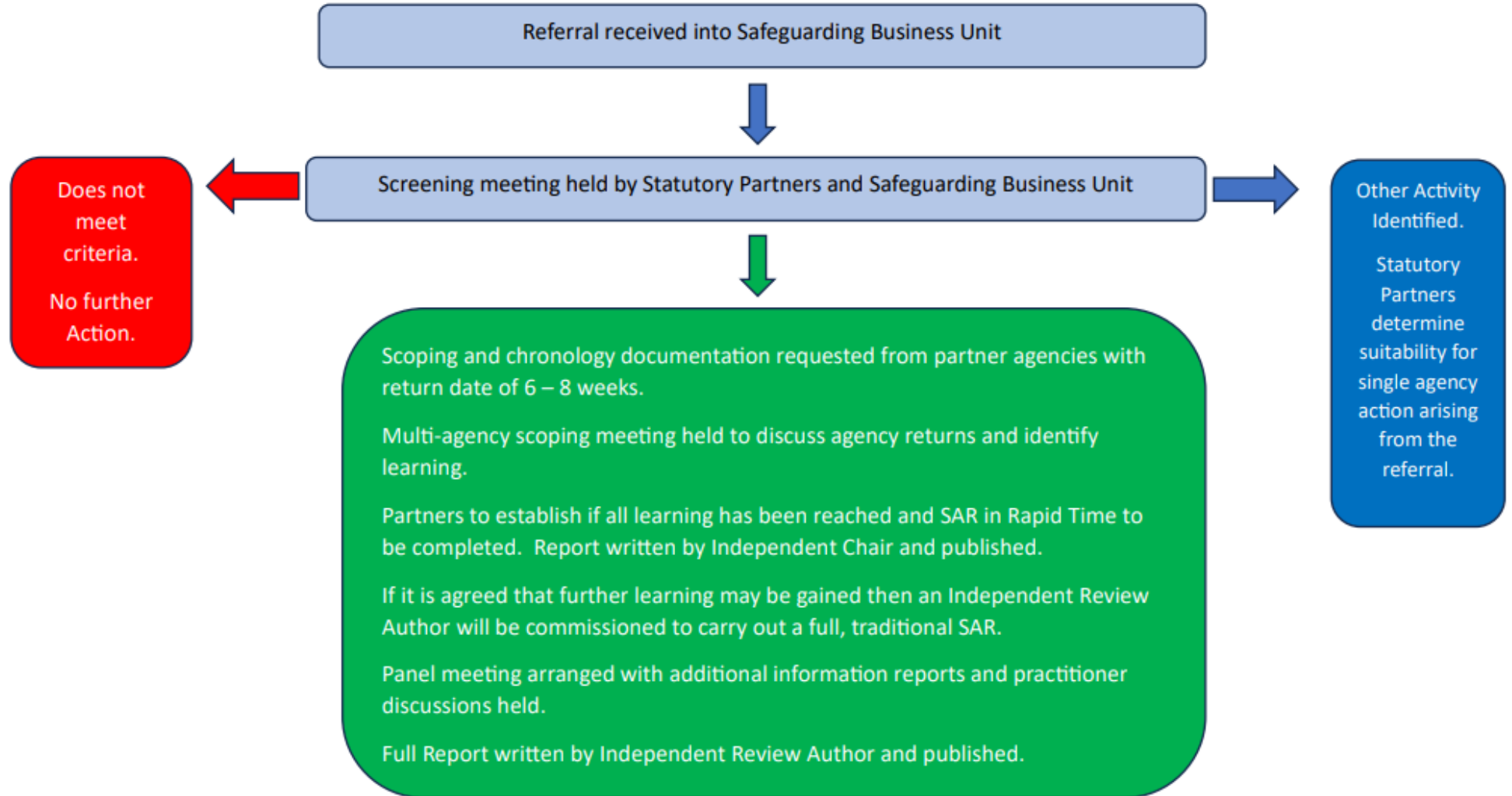


# Safeguarding Adult Review Referral Process

Agencies should use the local [Safeguarding Adult Review Referral Form](#) to contact the Safeguarding Partnership about any serious incidents that they think should be considered for a Safeguarding Adult Review.

For further information please refer to the [Regional Guidance](#)

## Flow Chart of Walsall Safeguarding Partnership Local Arrangement for Screening Referral Requests for Safeguarding Adult Reviews



## 7 Minute Briefing: Safeguarding Adult Review (SAR)



7

### Information & Resources

Should you have a case that you believe may meet the criteria for a SAR referral discuss this and seek approval from your line manager. The referral can be submitted to the Safeguarding Partnership Joint Case Review Group via [safeguardingbusinessunit@walsall.gov.uk](mailto:safeguardingbusinessunit@walsall.gov.uk)

The referral form and further details are hosted on the **Regional Adult Safeguarding Information Hub**.

6

### Learning from SARs

Once the final reports are published, lessons learnt will be disseminated via 7-minute briefings, workshops, and training events.

Further information on SARs, including published reviews, can be found on the **WSP website**.

If a referral does not meet the SAR criteria, then another course of action may be agreed to ensure learning is not lost such as a single agency review or other multi-agency review.

5

### SAR Process

SARs are written by an Independent Reviewer.

Terms of Reference for the SAR are recommended and agreed by the chair.

The Partnership contributes by providing chronologies and a narrative of their involvement to multiagency review meetings.

The views of those directly involved with the adult are sought, unless there are specific reasons for not doing so. The final report and action plan is approved by the WSP Executives and published.

1

### Background

A Safeguarding Adult Review takes place following reasonable cause for concern about the death or serious injury of an adult, with care and support needs, as a result of harm, abuse, or neglect.

Under the Care and Support Guidance (Department of Health, Care and Support Statutory Guidance, issued under the Care Act 2014), SARs are a statutory requirement for the Safeguarding Partnership.

2

### Aim

The aim of a SAR is to carry out a multi-agency review to determine what agencies could have done differently that could have prevented harm or a death from taking place.

*SARs are not carried out to apportion blame!*

The aim is to promote effective learning and improvement to prevent future deaths or harm occurring and to improve how agencies work together towards positive outcomes for adults and their families.

4

### Rationale

1. An adult has died, and the Safeguarding Partnership knows or suspects that the death resulted from abuse or neglect, whether or not they knew about or suspected the abuse or neglect before the adult died.
2. The adult is still alive, and the Safeguarding Partnership knows or suspects that the adult has experienced serious abuse or neglect.

3

### Rationale

Safeguarding Partnerships are responsible for undertaking a SAR where:

1. There is reasonable cause for concern about how the Safeguarding Partnership members or other agencies providing services worked together to safeguard the adult;

# NSPCC Learning: Case Reviews Update

The NSPCC Library hosts the National Collection of Case Reviews.

**Eight case reviews** have been added to the collection this month featuring issues including contextual safeguarding, infant deaths, child neglect and suicide.

[Read the Reviews](#)

## The voice of the child

Highlights learning from case reviews published between 2019 and 2023 where practice issues around hearing the voice of the child were identified as a key factor.

[Read the Briefing](#)



NSPCC Learning has published an overview of learning about assessment practice for social workers. Findings from case reviews and research are summarised in ten key practice points, each accompanied by a series of reflective questions.

- Read the practice points: [What makes a good assessment?](#)
- Read the learning from case reviews: [Assessments: learning from case reviews](#)
- Read the evidence snapshot: [Carrying out better assessments: evidence snapshot](#)

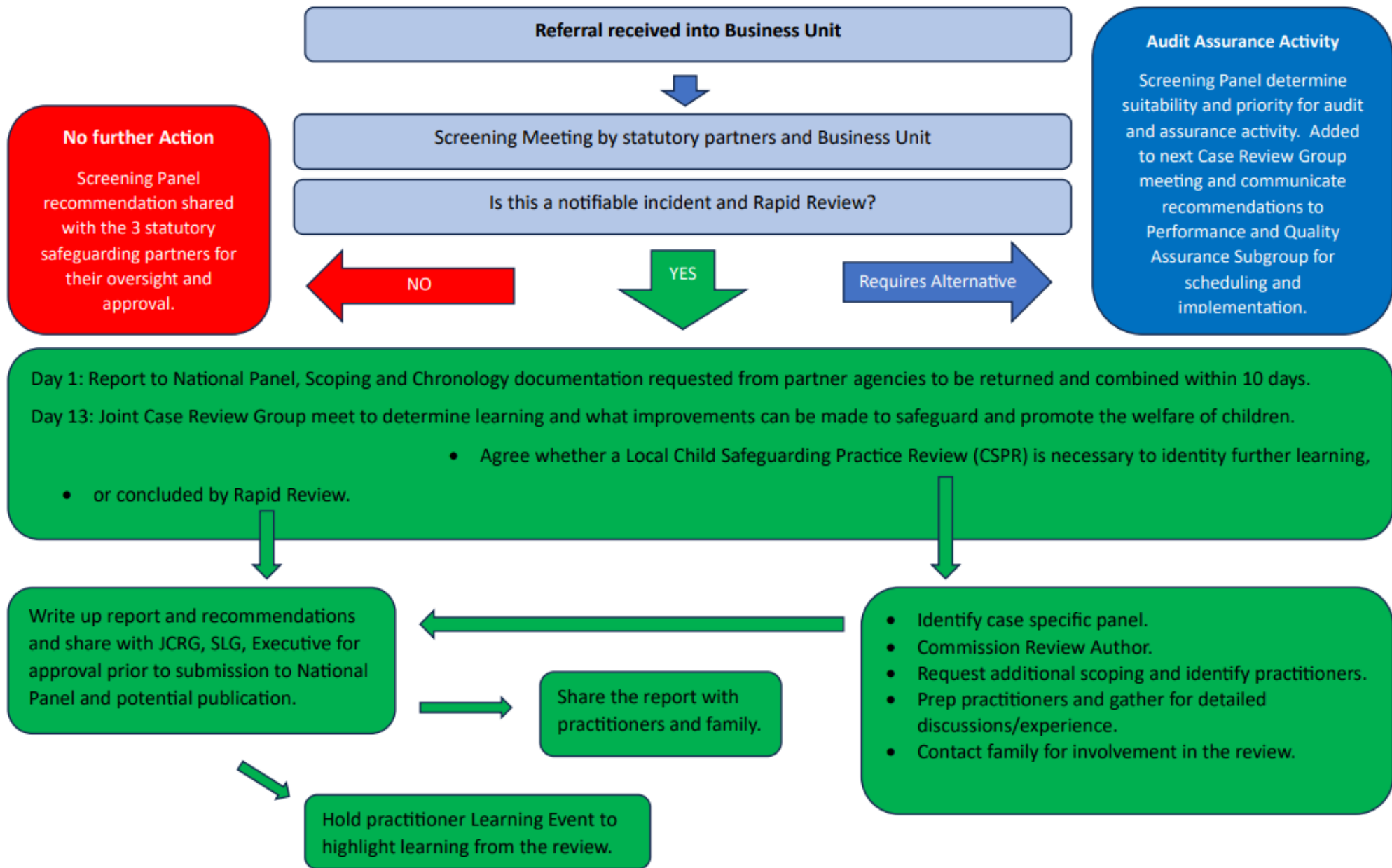
# Safeguarding Children Practice Review Referral Process

Agencies should use the [Rapid Review Referral Form](#) to contact the Safeguarding Partnership about any serious incidents that they think should be considered for a Local Child Safeguarding Practice Review.

For further information please refer to: Local Child Safeguarding Practice Review [Regional Toolkit and Guidance](#)



## Flow Chart of Walsall Safeguarding Partnership Local Arrangement for Screening Referral Requests for Rapid Review of Serious Safeguarding Practice incidents



**No further Action**  
Screening Panel recommendation shared with the 3 statutory safeguarding partners for their oversight and approval.

**Audit Assurance Activity**  
Screening Panel determine suitability and priority for audit and assurance activity. Added to next Case Review Group meeting and communicate recommendations to Performance and Quality Assurance Subgroup for scheduling and implementation.

Day 1: Report to National Panel, Scoping and Chronology documentation requested from partner agencies to be returned and combined within 10 days.  
Day 13: Joint Case Review Group meet to determine learning and what improvements can be made to safeguard and promote the welfare of children.

- Agree whether a Local Child Safeguarding Practice Review (CSPR) is necessary to identify further learning, or concluded by Rapid Review.

Write up report and recommendations and share with JCRG, SLG, Executive for approval prior to submission to National Panel and potential publication.

Share the report with practitioners and family.

- Identify case specific panel.
- Commission Review Author.
- Request additional scoping and identify practitioners.
- Prep practitioners and gather for detailed discussions/experience.
- Contact family for involvement in the review.

Hold practitioner Learning Event to highlight learning from the review.



# 7 Minute Briefing: Local Child Safeguarding Practice Review

7

## What happens next?

If the outcome of a Rapid Review determines the case meets the criteria to conduct a Local Child Safeguarding Practice Review, then the partnership will agree the methodology to use to ensure learning is identified and published on the Walsall Safeguarding Partnership website:

[Child Safeguarding Practice Reviews - Walsall Safeguarding Children \(walsallsp.co.uk\)](https://www.walsallsp.co.uk/child-safeguarding-practice-reviews)



1

## Background

The [Children and Social Work Act 2017](#) places the responsibility for learning lessons from serious child safeguarding incidents at a national level with the Child Safeguarding Practice Review Panel and at a local level with the local safeguarding partners.

6

## How do I refer a case for a Local Child Safeguarding Practice Review?

When you are satisfied the case is likely to meet the criteria, email a copy of the referral form to the email address on the form. A Rapid Review will then take place to establish if the case meets the criteria to undertake a Local Child Safeguarding Practice Review and will identify learning as part of the rapid review process.

Referral process and documentation can be found on [Local Policies and Procedures - Walsall Safeguarding Children \(walsallsp.co.uk\)](#)



2

## What is a Local Child Safeguarding Practice Review?

A Local Child Safeguarding Practice Review (LCSPR) is undertaken when a child dies or has been seriously harmed, abuse or neglect is known or suspected to be a contributory factor, and there is cause for concern as to the way organisations worked together.

5

## Who can refer a case for a Local Child Safeguarding Practice Review?

Anyone can refer a case for a Local Child Safeguarding Practice Review; however, staff should consult with their organisations safeguarding lead who will decide whether or not to refer it to Walsall Safeguarding Partnership.

4

## What kind of case would be referred for a Local Child Safeguarding Practice Review?

Serious child safeguarding cases should be referred for a Local Child Safeguarding Practice Review where:

- abuse or neglect of a child is known or suspected and
- the child has died or been seriously harmed.

Serious harm includes (but is not limited to) serious and/or long-term impairment of a child's mental health or intellectual, emotional, social or behavioural development. It should also cover impairment of physical health.

3

## What is the purpose of a Local Child Safeguarding Practice Review?

[Working Together 2023](#) states:

"The purpose of serious child safeguarding case reviews, at both local and national level, is to identify improvements to be made to safeguard and promote the welfare of children".

# Partnership

# NEWS



# NSPCC in the Midlands

**Listen up, Speak up** is an NSPCC campaign that helps adults know what to do if they're ever worried about a child or family.

Free bitesize training:

- The signs a child might be at risk and steps you can take to help.
- How to approach difficult conversations to help keep children safe.

## How can you support this campaign?

**1 Take the 10-minute digital training:** [nspcc.org.uk/speakup](https://nspcc.org.uk/speakup)

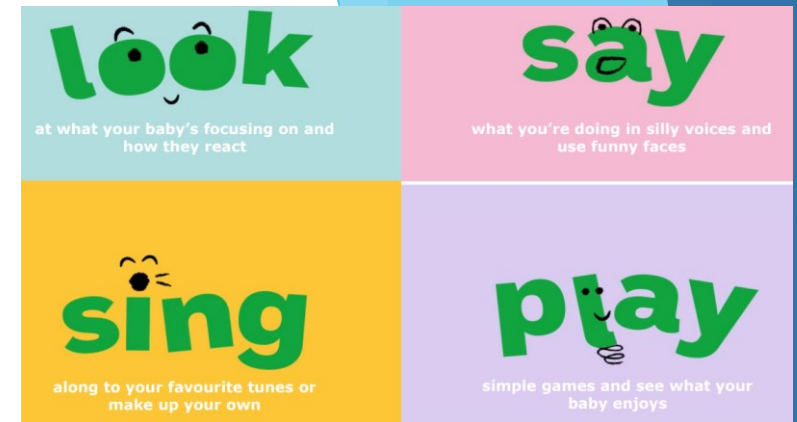
**2 Share our training with people that you know**

**3 Host a Listen up, Speak up workshop**

These are free, hour-long workshops that can be delivered at your workplace, school, club or community group.

**Building Connections** – online service for young people experiencing loneliness. 11 sessions with a befriender, working through a 7 step process. Providing tools to support resilience and explore ways of finding connection.

Watch: [Building Connections: Help Young People Tackle Loneliness](#)



**Look Say Sing Play** campaign is based on fun and easy tips to help parents have high quality interactions with their baby.

[YouTube playlist](#) of resources and ideas

Watch: [Responsive relationships builds strong brains](#)

Watch: [Building Strong Brain Architecture](#)



[learning.nspcc.org.uk](https://learning.nspcc.org.uk)

# CDOP Learning

## Safer Sleep Training – LAST CHANCE

Lullaby Trust training available for anyone who lives/works in the Black Country. Please make sure if you have registered you watch the videos and complete the evaluation form before 9th July 2024.

If you have not yet accessed the training, please register here for a last chance to access Lullaby Trust training on Safer sleep:  
<https://forms.office.com/e/ge85D3LHLE>



## Whooping cough and pregnancy

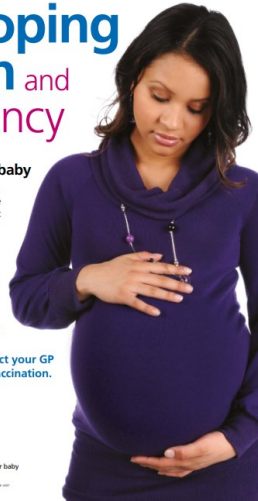
### Help protect your baby

There is a lot of whooping cough around at the moment. Babies are at most risk, especially in their first weeks of life.

Expectant mothers can help protect their baby by getting themselves vaccinated against whooping cough, from 16 weeks of pregnancy.

**Don't take the risk.**  
Act now to protect your baby from whooping cough from birth. Contact your GP or midwife to get the vaccination.

**Immunisation**  
the safest way to protect yourself and your baby



NHS

## Raise awareness of Pertussis -

**Whooping cough** can affect people of all ages but for very young infants, it can be particularly serious. Vaccination remains the very best protection for babies and children from becoming unwell with whooping cough.

- Mums-to-be are offered the vaccine between 16 and 32 weeks of pregnancy so their baby has protection against whooping cough until they are old enough to have the routine immunisation at 8 weeks old.
- All babies are given three doses of the 6-in-1 jab combination vaccine at 8, 12 and 16 weeks of age to protect against whooping cough and other serious diseases, with a pre-school booster offered at 3 years 4 months.
- It's best to have them on time, but children can still have the 6-in-1 vaccine up to the age of 10.

**Learning that has been identified** as a result of cases reviewed at the Black Country Child Death Overview Panel:

- ❖ The importance of Routine Enquiry
- ❖ Learning from recent Child Death Overview Panels in the Black Country

## THE FIVE R'S OF ENQUIRY\*



❖ **Routine enquiry** is about asking direct questions about domestic abuse, but it is more than a checklist. In the UK, it is estimated that 80% of women in a violent relationship seek help from health services at least once. Healthcare settings, give healthcare professionals an opportunity to routinely screen individuals for possible signs of intimate partner violence and offer specialist help.

- [Routine screening for domestic abuse](#) | British Journal of General Practice (bjgp.org)
- [DometicAbuseGuidance.pdf](#) (publishing.service.gov.uk)
- [Routinely asking women about domestic violence in health settings](#) - PMC (nih.gov)
- [NHSE GUIDANCE - COVID-19](#) (safelives.org.uk)
- [The Myth of Invisible Men](#) (publishing.service.gov.uk)

## ❖ Learning from Operational Panels

Themes highlighted:

- High BMI
- Polycystic Ovaries Syndrome (PCOS)
- Poverty and Deprivation
- Key worker role
- Palliative Care
- SUDIC and catastrophic collapse
- Universal distribution of Vitamin D
- Communication with parents (use of an interpreter)

# Training Opportunities

- WSP Learning Management System (LMS)
  - ❖ [Walsall Safeguarding - Learning Management System \(event-booking.org.uk\)](http://event-booking.org.uk)
  - ❖ [Delegate Registration \(event-booking.org.uk/register\)](http://event-booking.org.uk/register)
  - ❖ Terms & Conditions – including cancellation charges
  
- Reducing Parental Conflict Training
- Places available to book: WSP – June, July, August (virtual and face-to-face)
- Places available to book: Other – June, July, August (virtual and face-to-face)
- VRP Training Dates
  
- WSP eLearning
  
- Learning from Adult Reviews, Audits, Webinars, Briefings
- Learning from Child Reviews, Audits, Webinars, Briefings



# Places available on WSP Training in June, July, August 2024

- ❖ [Graded Care Profile 2 \(GCP2\) Training](#): 26 June
- ❖ [Understanding Neglect Level 2](#): 3 July
- ❖ [Supporting Families Coordinator Training \(Lead Professional\)](#): 5 July
- ❖ [Outcome Star Training](#): 8 July
- ❖ [Right Help Right Time - Full Training](#): 11 July
- ❖ [Reducing Parental Conflict Awareness Training Level 1](#): 7 August

# Places available on other training in June, July, August 2024

## **CGL, The Beacon**

- ❖ [Substance Misuse Awareness and the impact on Families](#): 25 June

## **Centre of Expertise**

- ❖ [Putting the Child Sexual Abuse Response Pathway into practice](#): 3 July
- ❖ [Spotting the signs and indicators of child sexual abuse](#): 16 July

## **Birmingham Mind**

- ❖ [Walsall Mental Health & Suicide Prevention](#): 28 June
- ❖ [Walsall Mental Health & Suicide Prevention](#): 1 July
- ❖ [Walsall Mental Health & Suicide Prevention](#): 9 July
- ❖ [Walsall Mental Health & Suicide Prevention](#) – Train the Trainer: 10 July
- ❖ [Walsall Mental Health & Suicide Prevention](#) – Trainer Forum: 16 July
- ❖ [Walsall Mental Health & Suicide Prevention](#) – Train the Trainer: 1 August
- ❖ [Walsall Mental Health & Suicide Prevention](#): 6 August
- ❖ [Walsall Mental Health & Suicide Prevention](#): 21 August

# VRP Training Dates: June, July, August 2024

[West Midlands Violence Reduction Partnership Events - Upcoming Activities and Tickets | Eventbrite](#)

- ❖ An Introduction to Adverse Childhood Experiences  
27 June, 2 July, 16 July, 30 July, 13 August, 28 August
- ❖ An Introduction to Trauma Informed working in healthcare settings  
23 July
- ❖ Change Makers Programme  
28 June, 26 July
- ❖ Ending Male Violence Against Women and Girls (EMVAWG)  
27 June, 24 July, 29 August
- ❖ Exploitation Webinar  
24 June, 8 July, 22 July, 5 August, 19 August
- ❖ Mentors in Violence Prevention  
28 June, 26 July
- ❖ Public Health Approach to Violence Prevention  
25 June, 9 July, 23 July, 6 August, 20 August
- ❖ Serious Violence Duty Briefing  
19 July, 23 August
- ❖ Sport and Serious Violence Duty  
11 July, 19 August
- ❖ Trauma Informed Practice  
1 July, 15 July, 29 July, 12 August, 27 August
- ❖ Working with Trauma in Early Years  
27 June, 25 July, 29 August

**To register your place visit:** [West Midlands Violence Reduction Partnership Events - Upcoming Activities and Tickets | Eventbrite](#)



The West Midlands Violence Reduction Partnership offers a wide variety of training courses for professionals working throughout the West Midlands.

Each course has online dates available every month; but if you are interested in any of the courses for your team or organisation, you can also contact [vrp@westmidlands.police.uk](mailto:vrp@westmidlands.police.uk) to arrange a specific date to suit your needs which can be delivered either in person or online.



# WSP eLearning modules

**Walsall Safeguarding Partnership also offers a variety of eLearning training courses:**

Adults Safeguarding Awareness Level 1

Advocacy (Care Act) - external learning

Child Neglect Awareness – Level 1

Determining eligibility under the Care Act 2014 - external learning

Female Genital Mutilation: Recognising and Preventing (FGM) – external learning

ICON: 'Babies cry, you can cope'

Introduction to Safeguarding Children – Level 1

Personalisation – external learning

Private Fostering Module

Understanding Mental Capacity Act – Level 2

Understanding Safeguarding Children – Level 2

**To find out more about the eLearning courses and how to book, please visit:**

**<https://walsall.event-booking.org.uk/elearning-list>**

# Thank you for taking the time to read the WSP Safeguarding Spotlight

If you would like an item to be featured in the next edition,  
please send your information through to:  
[Safeguardingbusinessunit@walsall.gov.uk](mailto:Safeguardingbusinessunit@walsall.gov.uk)

To receive the Spotlight and any news updates please  
subscribe to our website: [walsallsp.co.uk](http://walsallsp.co.uk)

## Sign Up to Our Newsletter

For the latest news from the Safeguarding Partnership, please sign up to our newsletter below:

Name\*

Email\*



I am human



hCaptcha  
Privacy - Terms

Submit